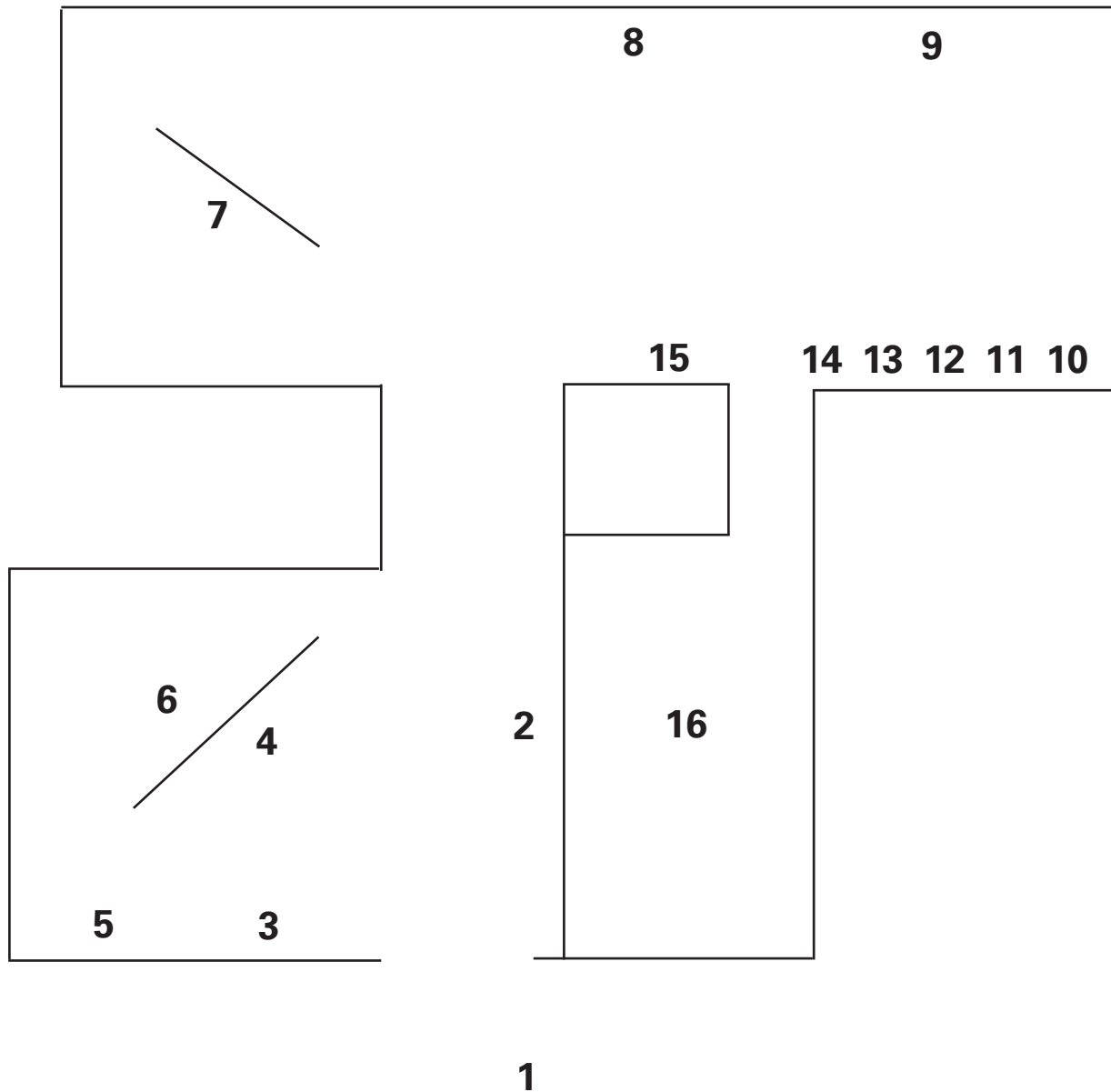


# The Sky Is Falling

Black Audio Film Collective, Laura Oldfield Ford,  
Clara Ianni, Dora Mejía and Carol Rhodes

1 April – 14 May 2017

Tue-Sat: 11am-6pm // Sun: 12noon-6pm // Free



**CCA:** Centre for  
Contemporary Arts



1. Dora Mejía, *The Garden of Eden*, mixed media: satellite photography, 98 colour prints on satin, variable dimensions, 2014
2. Dora Mejía, *The Garden of Eden*, mixed media: satellite photography, 98 colour prints on satin, variable dimensions, 2014
3. *The Sky is Falling Reader*, on sale at box office for £5
4. Carol Rhodes, *River, Roads*, oil on board, 50 x 57 cm, 2013
5. Clara Ianni, *Class Drawings*, framed prints, 2017
6. Clara Ianni, *Free Form*, video, 7 mins 14sec, loop, 2013
7. Laura Oldfield Ford, *Radiant Futures*, sound and mixed media, 2017
8. Dora Mejía, *The Garden of Eden*, mixed media: satellite photography, 98 colour prints on satin, variable dimensions, 2014
9. Dora Mejía, *Wandering Stars*, graphics in situ, 2017
10. Carol Rhodes, *Development Centre, Roads*, framed drawing, 50 x 70 cm, 2010
11. Carol Rhodes, *Sea and Motorway*, framed drawing, 48 x 42 cm, 1998
12. Carol Rhodes, *Sheds*, framed drawing, 45 x 51 cm, 2013
13. Carol Rhodes, *Reservoir*, framed drawing, 45 x 43 cm, 1999
14. Carol Rhodes, *Open Ground and Mudflats*, framed drawing, 45 x 51 cm, 2009
15. Carol Rhodes, *Roads, Buildings (evening)*, oil on board, 51 x 53.5 cm, 2013, Courtesy of Toby Treves
16. Black Audio Film Collective, *Twilight City*, Dir. Reece Auguiste, 52mins, loop, 1989